

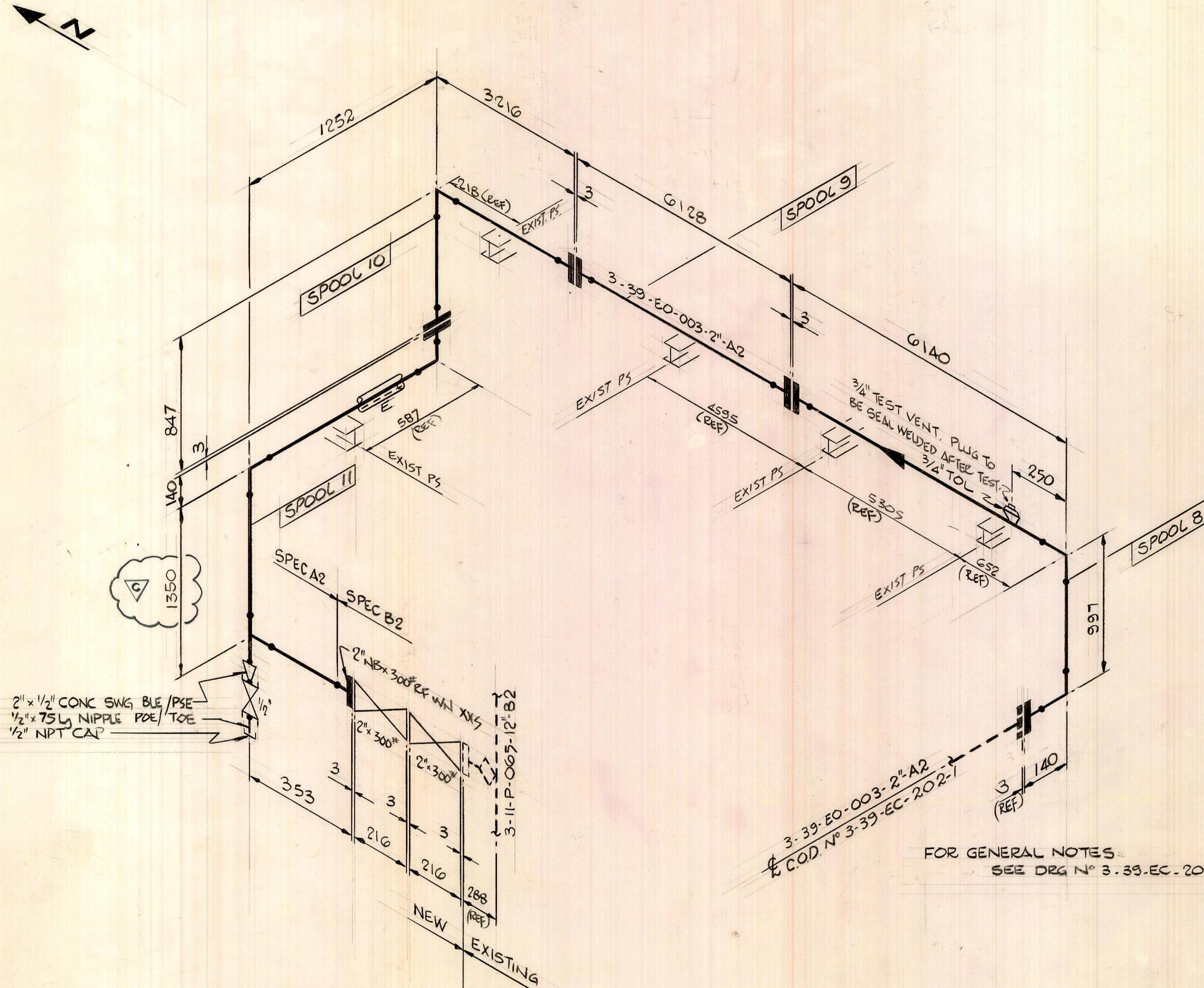
DRG. No. 3-39-EC-203-1

LIST OF MATERIAL FOR FABRICATION

ITEM	QTY	SIZE	DESCRIPTION	Wt/kg
	20M	2"NB	PIPE CS SMLS SCH160 A106 GRB	222
5		2"NB	ELBOW 90° LB BW SCH160 A234 WPB	9
1		2"NB	TEE EQUAL BW SCH160 A234 WPB	3
1		2"x1/2"	CONC SWG BLE/PSE SCH160 A105	1
1		1/2"	NIPPLE TSL SMLS SCH160 A106 GRB ROE/PE	1
1		2"x3/4"	THREDOLET 6000* A105	1
1		2"NB	FLANGE 300* RF WN SCH160 A105	3
7		2"NB	FLANGE 150* RF WN SCH160 A105	28
1		1/2"	VALVE GATE 1500* SW A105	4


LIST OF MATERIAL FOR CONSTRUCTION

3	2"NB	GASKET 300* FR SP WOUND SS/CAF	-
24	5/8"	x 85Lg STUDBOLTS 1/4" 2NUTS CAP REF A193-B7/A194-2H	5
1	3/4"	PLUG 6000* SCRD NPT A105	-
1	1/2"	CAP 6000* SCRD NPT A105	-
2	2"	VALVE GATE FLGD 300* RF A216 WCB	43
3	2"	GASKET 150* FR SP WOUND SS/CAF	-
12	5/8"	x 80Lg STUDBOLTS 1/4" 2NUTS CAP REF A193-B7/A194-2H	2



FOR GENERAL NOTES
SEE DRG N° 3-39-EC-201-1

THIS DRAWING CONTAINS PROPRIETARY
INFORMATION BELONGING TO HAMILTON
BROTHERS AND MAY NOT BE WHOLLY OR
PARTIALLY REPRODUCED NOR DISCLOSED
WITHOUT PRIOR WRITTEN PERMISSION
OF HAMILTON BROTHERS OIL AND GAS
LTD.

C	AS-BUILT	HCP	DW	5/4/88		
B	ISSUED FOR CONSTRUCTION	DC	GE	3/88		
A	ISSUED FOR COMMENT	JM	GE	03/88		
REV	DESCRIPTION OF REVISION	CHNGE REQ BY	DRAWN BY	CHKD BY	APPRV BY	DATE
ORIGINAL PROJECT No. EEHB 2802						
PROJECT TITLE						
 HAMILTON BROTHERS OIL AND GAS LIMITED						
LOCATION: DEEP SEA PIONEER						
TITLE: REPLACEMENT PIPEWORK FOR CLOSED DRAIN SYSTEM						
DRG. No. 3-39-EC-203-1						REV. C
SHEET OF						
ENGINEER H.B.O.G.LTD.	DRAWN BY JM	CHECKED BY GE	APPROVED H.B.O.G.LTD. D.W.	DATE MAR 88		